

Alaska Department of Fish and Game

Habitat Section
Southeast Region



186-15-10550-2005-3040-4040 Tributary 1

ADDITION

Water body name:

Survey date: 8/23/2024

Quad: Icy Bay D2, D3

Species & Lifestage:

Upper Reach Latitude: 59.985358 **Longitude:** -141.560841

Survey crew: NJ, CD, FC

Lower Reach Latitude: 59.984864 **Longitude:** -141.560667

Findings: We surveyed this uncataloged stream using a backpack electrofisher and GPS and captured juvenile coho salmon and Dolly Varden, and visually identified adult sockeye salmon, some of which were in the early stages of post-spawning decay. The extent that the adult sockeye travel is unknown, but they can likely make it up further as no barriers were seen. Fish habitat consists of mixed gravels and pools. Channel remains defined up until it enters an open wetland area; the upper extent of the stream was dry but defined (Table 1; Figures 1–4).

Recommendations: Add this uncataloged stream to the anadromous waters catalog for rearing coho salmon and sockeye present up to waypoint 1134 (Figure 5).

Nomination: Pending

Table 1.–186-15-10550-2005-3040-4040 tributary 1 survey data.

| Waypoint | Latitude | Longitude | Notes | Stream Width ft | Stream Substrate | Habitat Features | Gradient % | Sample Effort | Sample Results |
|----------|-----------|-------------|--|-----------------|----------------------|------------------|------------|---------------|----------------|
| 1065 | 59.984856 | -141.560810 | Adult seen but unsure of species. Confluence of channel that goes up to canyon waterfall. | | Large Gravel | | 1-2 | EF | 4 CO |
| 1082 | 59.987756 | -141.567417 | Continue to fish channel downstream. Main channels splits at this location with river left channel dry and river right channel having the main flow. | | Cobble | | 4-6 | EF | No Fish |
| 1132 | 59.984934 | -141.560971 | Returning to river-right tributary to survey upstream. Adult sockeye observed via visual ID in pool about 20 ft upstream from confluence. Advancing upstream to electrofish for juvenile | 6-8 | Silt Large Gravel | | 2-4 | VI | 4 S |
| 1133 | 59.985067 | -141.561256 | | 6-8 | Silt Small Gravel | | 2-4 | EF | 2 CO 1 DV |
| 1134 | 59.985318 | -141.560707 | About 30 ft upstream of CO capture, stream seeps out from diffuse wetland area with silty/sandy sediment overgrown with horsetails. | | Silt Fine Organic | | 0-1 | | 2 CO |



Figure 1.–Juvenile coho salmon caught at waypoint 1134.



Figure 2.—Sockeye salmon identified at waypoint 1132.



Figure 3.—Upstream at waypoint 1134.



Figure 4.—Downstream at waypoint 1134.

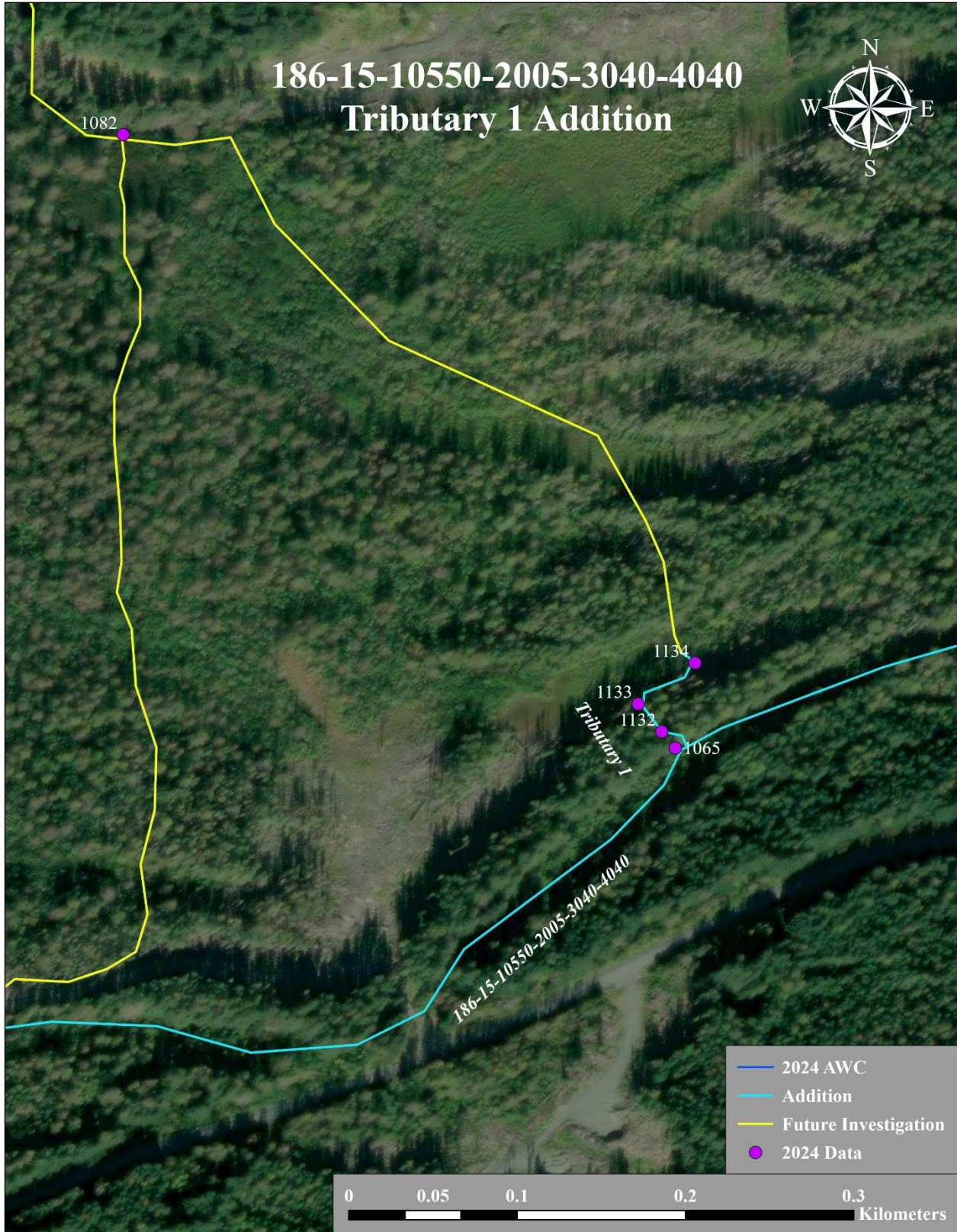


Figure 5.—186-15-10550-2005-3040-4040 tributary 1 addition map.